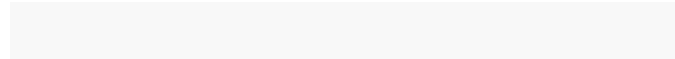




1092, .” ” 3, .: 92 20922; : 987 96 93



” ”

6

” – **BG0000420**

·
2012 .

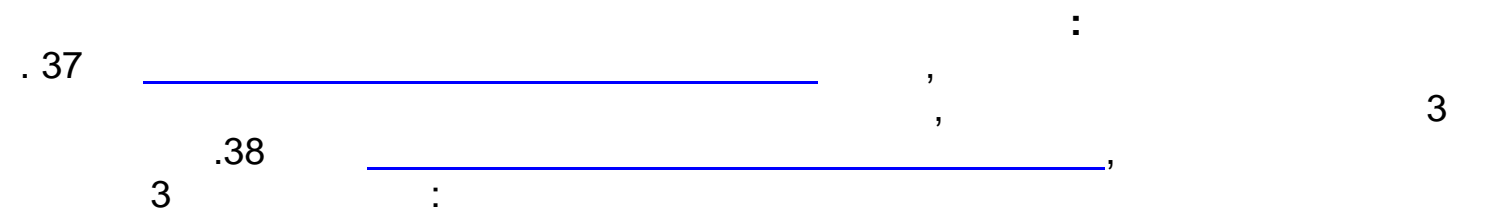


122 2 21.11.2006 .
2007 .



, - 9856, 35 (158 446, 403)

- ;
 - ;
 - ;
 .



1. ,
2. ,
3. ;
4. ;
5. ,
6. (. - , .94 2007 .) , , , , ,
7. , , , , , , , , ,

. 1, . 1, 2, 6 7

. 40, 3 :

- 1. , , ,
- 2. (. - , . 94 2007 .) , , , ,

* . 1 .

. 45
3 4, _____,

. 46. . 45 :

- 1. , .
- 2. .
- 3. , .
- 4. , , ,
- 5. , .

:

1. _____ | _____ [92/43/EEC](#)

**1. 6110* -
SEDION ALBI**

ALYSSO

2. 6210* -
(FESTUCO-BROMETALIA) ,

3. 62A0 -

4. 8230 -
SCLERANTHION

SEDON ALBI VERONICION DILLENII

SEDON

5. 9170 -

6. 9180* -

7. 91AA* -

8. 91M0 -

GALIO- CARPINETUM
TILIO ACERION

*
*

92/43/

2.

I

79/409/EEC

| | |
|--------|-------------------------|
| A321 - | /FICEDULA ALBICOLLIS/ |
| A078 - | /GYPSFULVUS/ |
| A403 - | /BUTEORUFINUS/ |
| A215 - | /BUBO BUBO/ |
| A097 - | /FALCO VESPERTINUS/ |
| A246 - | /LULLULA ARBOREA/ |
| A379 - | /EMBERIZA HORTULANA/ |
| A077 - | /NEOPHRON PERCNOPTERUS/ |
| A229 - | /ALCEDO ATTHIS/ |
| A224 - | /CAPRIMULGUS EUROPAEUS/ |
| A404 - | () /AQUILA HELIACA/ |
| A084 - | /CIRCUS PYGARGUS/ |
| A122 - | /CREX CREX/ |
| A089 - | /AQUILA POMARINA/ |
| A080 - | /CIRCAETUS GALLICUS/ |
| A072 - | /PERNIS APIVORUS/ |
| A082 - | /CIRCUS CYANEUS/ |
| A231 - | /CORACIA SGARRULUS/ |
| A429 - | /DENDROCOPOS SYRIACUS/ |
| A091 - | /AQUILA CHRYSAETOS/ |
| A103 - | /FALCO PEREGRINUS / |
| A238 - | /DENDROCOPOS MEDIUS/ |
| A074 - | /MILVUS MILVUS/ |
| A338 - | /LANIUS COLLURIO/ |
| A236 - | /DRYOCOPUS MARTIUS/ |
| A073 - | /MILVUS MIGRANS/ |
| A307 - | /SYLVIA NISORIA/ |



A321 -
/FICEDULA
ALBICOLLIS/



A078 -
/GYPSFULVUS/



A403 -
/BUTEORUFINUS/



A215 - /BUBO BUBO/



A097 -
/FALCO VESPERTINUS/



A246 -
/LULLULA ARBOREA/



A379 -
/EMBERIZA HORTULANA/



A077 -
/NEOPHRON PERCNOPTERUS/



A229 -
/ALCEDO ATTHIS/



A224 - /CAPRIMULGUS
EUROPAEUS/



A404 - ()
/AQUILA HELIACA/



A084 - /CIRCUS
PYGARGUS/



A122 -
/CREX CREX/



A089 -
/AQUILA POMARINA/



A080 -
/CIRCAETUS GALLICUS/



A072 - /PERNIS APIVORUS/



A082 - /CIRCUS CYANEUS/



A231 - /CORACIA SGARRULUS/



A429 - /DENDROCOPOS SYRIACUS/



A091 - /AQUILA CHRYSAETOS/



A103 - /FALCO PEREGRINUS/



A238 - /DENDROCOPOS MEDIUS/



A074 - /MILVUS MILVUS/



A338 - /LANIUS COLLURIO/



A236 -
/DRYOCOPUS MARTIUS/



A073 - /MILVUS
MIGRANS/



A307 -
/SYLVIA NISORIA/

3.

I 79/409/EEC :

| | |
|--------|--------------------------|
| A311 - | /SYLVIA ATRICAPILLA/ |
| A218 - | /ATHENE NOCTUA/ |
| A443 - | /PARUS LUGUBRIS/ |
| A235 - | /PICUS VIRIDIS/ |
| A363 - | /CARDUELIS CHLORIS/ |
| A377 - | /EMBERIZA CIRLUS/ |
| A244 - | /GALERIDA CRISTATA/ |
| A283 - | /TURDUS MERULA/ |
| A086 - | /ACCIPITER NISUS/ |
| A087 - | /BUTEO BUTEO/ |
| A230 - | /MEROPS APIASTER/ |
| A359 - | /FRINGILLA COELEBS/ |
| A366 - | /CARDUELIS CANNABINA/ |
| A099 - | /FALCO SUBBUTEO/ |
| A285 - | /TURDUS PHILOMELOS/ |
| A247 - | /ALAUDA ARVENSIS/ |
| A251 - | /HIRUND RUSTICA/ |
| A383 - | /MILIARIA CALANDRA/ |
| A329 - | /PARUS CAERULEUS/ |
| A269 - | /ERITHACUS RUBECULA/ |
| A382 - | /EMBERIZA MELANOCEPHALA/ |
| A096 - | /FALCO TINNUNCULUS/ |

| | |
|--------|-------------------------|
| A214 - | /OTUS SCOPS/ |
| A271 - | /LUSCINIA MEGARHYNCHOS/ |



A311 -
/SYLVIA
ATRICAPILLA/



A218 -
/ATHENE NOCTUA/



A443 -
/PARUS LUGUBRIS/



A235 -
/PICUS
VIRIDIS/



A363 -
/CARDUELIS
CHLORIS/



A377 -
/EMBERIZA CIRLUS/



A244 -
/GALERIDA CRISTATA/



A283 -
/TURDUS MERULA/



A086 -
/ACCIPITER NISUS/



A087 -
/BUTEO BUTEO/



A230 -
/MEROPS APIASTER/



A359 -
/FRINGILLA COELEBS/



A366 -
/CARDUELIS
CANNABINA/



A099 - /FALCO SUBBUTEO/



A285 - /TURDUS
PHILOMELOS/



A247 -
/ALAUDA ARVENSIS/



A251 -
/HIRUND RUSTICA/



A383 - /MILIARIA
CALANDRA/



A329 - /PARUS
CAERULEUS/



A269 -
/ERITHACUS RUBECULA/



A382 -
/EMBERIZA
MELANOCEPHALA/



A096 -
/FALCO TINNUNCULUS/



A214 - /OTUS SCOPS/



A271 -
/LUSCINIA MEGARHYNCHOS/

4.

,

II

92/43/EEC:

| | |
|-----------|-----------------------------|
| 1303 - MA | /RHINOLOPHUS HIPPOSIDEROS/ |
| 1355 - | /LUTRA LUTRA/ |
| 1324 - | /MYOTIS MYOTIS/ |
| 1304 - | /RHINOLOPHUS FERRUMEQUINUM/ |
| 2609 - | () /MESOCRICETUS NEWTONI/ |
| 1310 - | /MINIOPTERUS SCHREIBERSI/ |
| 1316 - | /MYOTIS CAPACCINII/ |

| | |
|--------|-------------------------|
| 1323 - | /MYOTIS BECHSTEINI/ |
| 1352 - | /CANIS LUPUS/ |
| 1335 - | /SPERMOPHILUS CITELLUS/ |
| 1302 - | /RHINOLOPHUS MEHELYI/ |
| 2635 - | /VORMELA PEREGUSNA/ |
| 1321 - | /MYOTISE MARGINATUS/ |
| 1305 - | / RHINOLOPHUS EURYALE/ |



1303 - MA
/RHINOLOPHUS
HIPPOSIDEROS/



1355 - /LUTRA LUTRA/



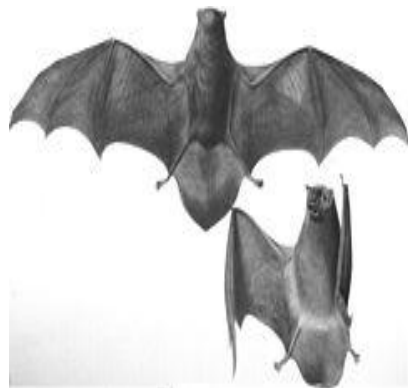
1324 - /MYOTIS
MYOTIS/



1304 -
/RHINOLOPHUS FERRUMEQUINUM/



2609 -
()
/MESOCRICETUS NEWTONI/



1310 -
/MINIOPTERUS SCHREIBERSI/



1316 -
/MYOTIS CAPACCINII/



1323 -
/MYOTIS
BECHSTEINI/



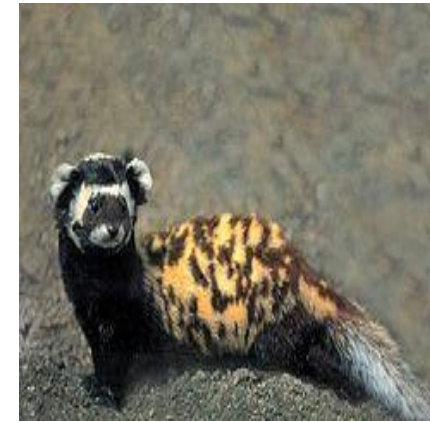
1352 -
/CANIS LUPUS/



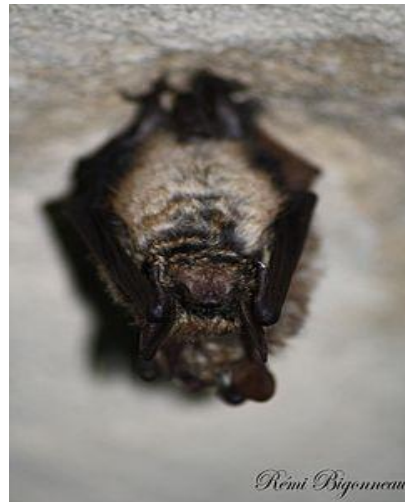
1335 - /SPERMOPHILUS
CITELLUS/



1302 -
/RHINOLOPHUS MEHELYI/



2635 - /VORMELA
PEREGUSNA/



1321 -
/MYOTISE MARGINATUS/



1305 - /
RHINOLOPHUS EURYALE/

5.

,

II

92/43/EEC

1188 -

/BOMBINA BOMBINA/

| | |
|--------|-------------------------|
| 1193 - | /BOMBINA VARIEGATA/ |
| 1279 - | /ELAPHE QUATUORLINEATA/ |
| 1220 - | /EMYS ORBICULARIS/ |
| 1219 - | /TESTUDO GRAECA/ |
| 1217 - | /TESTUDO HERMANNI/ |
| 1171 - | /TRITURUS KARELINII/ |



1188 - /BOMBINA BOMBINA/



1193 - /BOMBINA VARIEGATA/



1279 - /ELAPHE QUATUORLINEATA/



1220 - /EMYS ORBICULARIS/



1219 - /TESTUDO GRAECA/



1217 - /TESTUDO HERMANNI/



1171 - /TRITURUS KARELINII/

6.

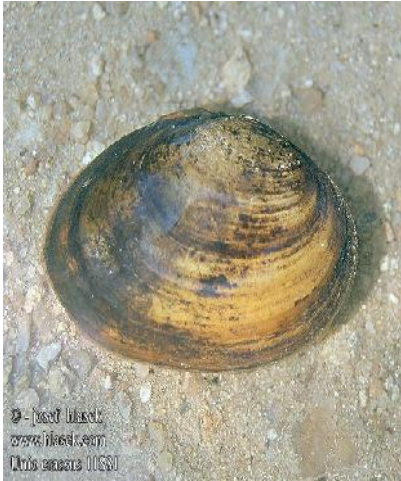
,

II

92/43/EEC:

| | |
|--------|--------------------------------|
| 1032 - | /UNIO CRASSUS/ |
| 4053 - | /PARACALOPTENUS CALOPTENOIDES/ |
| 1088 - | /CERAMBYX CERDO/ |

| | |
|--------|--------------------|
| 1083 - | /LUCANUS CERVUS/ |
| 1089 - | /MORIMUS FUNEREUS/ |
| 1087 - | /ROSALIA ALPINA/ |



1032 - CRASSUS/ UNIO



4053 - PARACALOPTENUS
CALOPTENOIDES/



1088 - CERDO/ CERAMBYX



1083 - LUCANUS CERVUS/



1089 - MORIMUS
FUNEREUS/



1087 - ROSALIA ALPINA/

| | |
|---|-------------------------------|
| | /RANA DALMATINA/ |
| | /BUFO VIRIDIS/ |
| | /HYLA ARBOREA/ |
| | /OENANTHE ISABELLINA/ |
| | /EMBERIZA CIA/ |
| | /EMBERIZA CITRINELLA/ |
| | /DENDROCOPOS MINOR/ |
| | /DENDROCOPOS MAJOR/ |
| | /HIRUNDO DAURICA/ |
| | /CINCLUS CINCLUS/ |
| X | /CARDUELIS SPINUS/ |
| | /LANIUS SENATOR/ |
| | /CORVUS CORAX/ |
| | /DELICHON URBICA/ |
| | /COCCOTHAUSTES COCCOTHAUSTES/ |
| | /PASSER HISPANIOLENSIS/ |
| | /UPUPA EPOPS/ |
| | /TROGLODYTES TROGLODYTES/ |
| | /SYLVIA COMMUNIS/ |
| | /SITTA EUROPAEA/ |
| | /AEGITHALOS CAUDATUS/ |
| | /PHYLLOSCOPUS COLLYBITA/ |
| | /ASIO OTUS/ |
| | /PARUS PALUSTRIS/ |
| | /PARUS MAJOR/ |
| | /ORIOLOUS ORIOLOUS |
| | /OENANTHE OENANTHE/ |
| | /MOTACILLA FLAVA/ |
| | /APUS APUS/ |
| / | / / /CROCIDURA LEUCODON/ |
| | /CROCIDURA SUAVEOLENS/ |
| | /DRYOMYS NITEDULA/ |
| | / / /ERINACEUS CONCOLOR/ |
| | /FELIS SILVESTRIS/ |
| | /MUSCARDINUS AVELLANARIUS/ |
| | /MUSTELA NIVALIS/ |
| | /NEOMYS ANOMALUS/ |
| (|) /COLUBER CASPIUS/ |
| | /ELAPHE LONGISSIMA/ |
| | /ABLEPHARUS KITAIBELII/ |
| | /LACERTA VIRIDIS/ |
| | /VIPERA AMMODYTES/ |
| | /NATRIX TESSELLATA/ |
| | /PODARCIS MURALIS/ |

/PODARCIS TAURICA/
/LACERTA TRILINEATA/



/RANA DALMATINA/



/VIRIDIS/ /BUFO



/HYLA ARBOREA/



/OENANTHE ISABELLINA/



/EMBERIZA CIA/



/EMBERIZA
CITRINELLA/



/DENDROCOPOS MINOR/



/DENDROCOPOS MAJOR/



/HIRUNDO DAURICA/



/CINCLUS CINCLUS/



X /CARDUELIS
SPINUS/



/LANIUS SENATOR/



/CORVUS CORAX/



/DELICHON
URBICA/



/COCCOTHAUSTES
COCCOTHAUSTES/



/PASSER
HISPANIOLENSIS/



/UPUPA EOPS/



/TROGLODYTES
TROGLODYTES/



/SYLVIA COMMUNIS/



/SITTA EUROPAEA/



/AEGITHALOS CAUDATUS/



/PHYLLOSCOPUS
COLLYBITA/



/ASIO OTUS/



/PARUS PALUSTRIS/



/PARUS MAJOR/



/ORIOIUS ORIOIUS



/OENANTHE
OENANTHE/



/MOTACILLA FLAVA/



/APUS APUS/



/CROCIDURA
LEUCODON/



/CROCIDURA
SUAVEOLENS/



/DRYOMYS NITEDULA/

[/LACERTA VIRIDIS/](#)

[/VIPERA
AMMODYTES/](#)



Zdravko Kolev, 2005

[/PODARCIS
TAURICA/](#)

[/NATRIX
TESSELLATA/](#)



[/LACERTA
TRILINEATA/](#)

[/PODARCIS MURALIS/](#)