



---

1092, .” ” 3, .: 92 20922; : 987 96 93

\_\_\_\_\_”

”

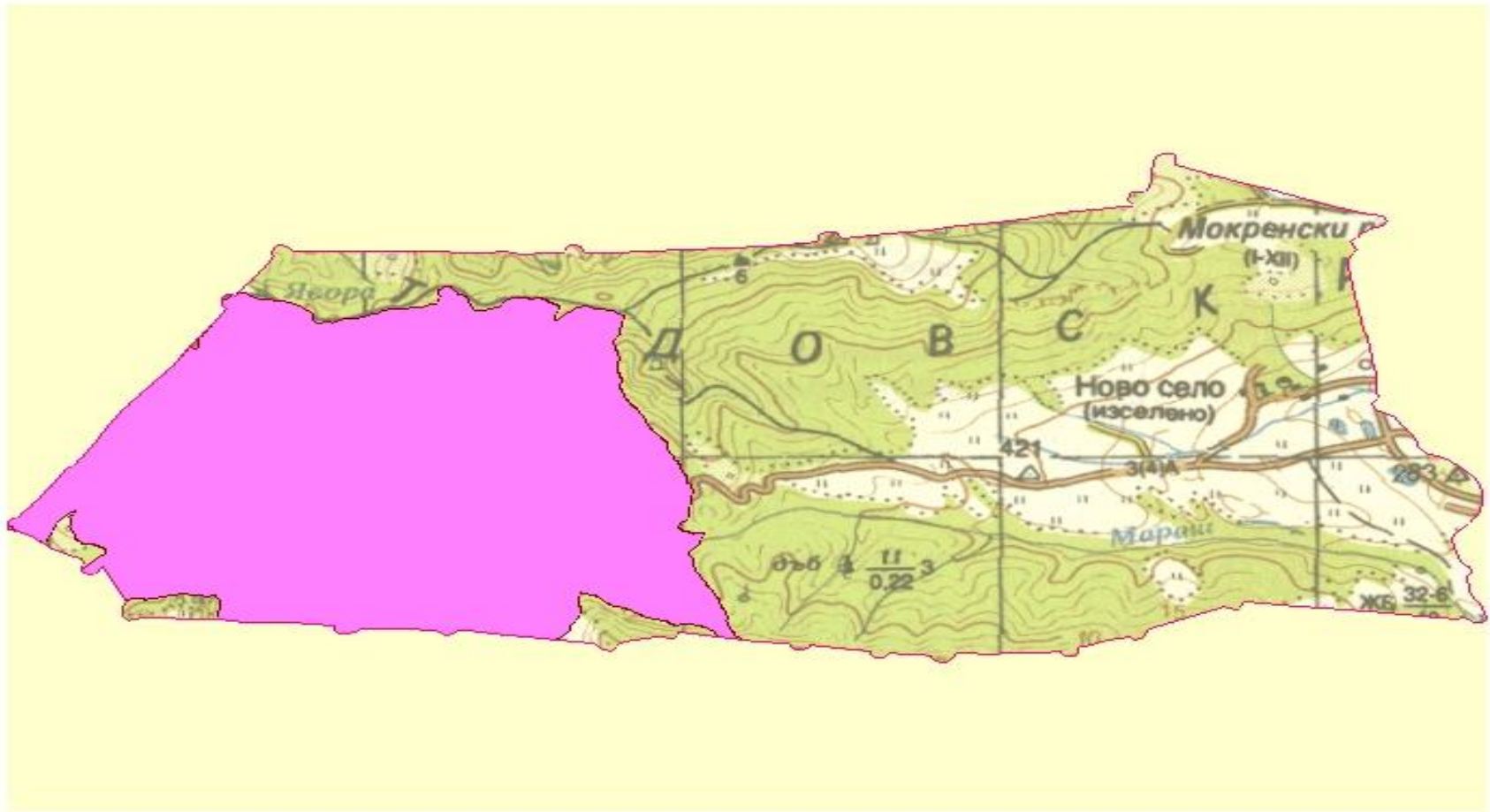
**3**

”

**” – BG 0000164**

▪

**2012 .**



122 : 21.11.2006 .  
02.03.2007 .  
.21 09.03.2007 .

:



1. . 40, 3 :

2. ( . - , . 94 2007 . ) ;

\* . 1

3 4, . 45 \_\_\_\_\_ ,

1. . 46. . 45 :

2. ;

3. ;

4. , , ,

5. ;

1. \_\_\_\_\_ | \_\_\_\_\_ **92/43/EEC**
- 6110\* - **ALYSSO- SEDION ALBI**
  - 6210\* - **(FESTUCO**
  - **BROMETALIA) (\*** )
  - 6230\* -
  - 8120 -
  - 8210 -
  - 9110 - **LUZULO FAGETUM**
  - 9130 - **ASPERULO - FAGETUM**
  - 9150 - **(CEPHALANTHERO FAGION)**
  - 9170 - **GALIO - CARPINETUM**
  - 9180\* - **TILIO - ACERION**

- 91AA\* -
- 91M0 -
- 91W0 -
- 91Z0 -

92/43/

2.

II

92/43/EEC

1303 - MA	/RHINOLOPHUS HIPPOSIDEROS/
1355 -	/LUTRA LUTRA/
1324 -	/MYOTIS MYOTIS/
1304 -	/RHINOLOPHUS FERRUMEQUINUM/
1310 -	/MINIOPTERUS SCHREIBERSI/
1316 -	/MYOTIS CAPACCINII/
1323 -	/MYOTIS BECHSTEINI/
1352 -	/CANIS LUPUS
1335 -	/SPERMOPHILUS CITELLUS/
1307 -	/MYOTIS BLYTHII/
1302 -	/RHINOLOPHUS MEHELYI/
2635 -	/VORMELA PEREGUSNA/
1306 -	/RHINOLOPHUS BLASII/
1321 -	/MYOTIS EMARGINATUS/
1308 -	/BARBASTELLA BARBASTELLUS/
1305 -	/RHINOLOPHUSEURYALE/



1303 - Ma  
/Rhinolophus hipposideros/



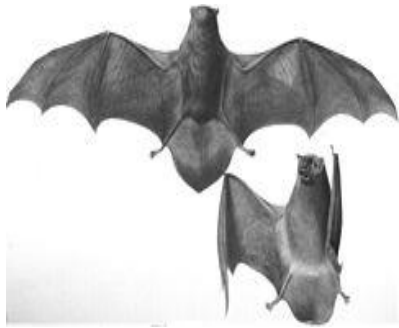
1355 -  
/Lutra lutra/



1324 - /Myotis myotis/



1304 -  
/Rhinolophus ferrumequinum/



1310 - /Minopterus schreibersi/



1316 - /Myotis capaccinii/



1323 - /Myotis bechsteini/



1352 - /Canis lupus



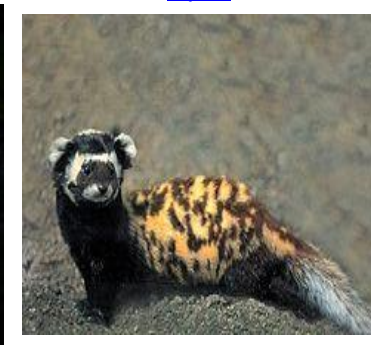
1335 - /Spermophilus citellus/



1307 /Myotis blythii/



1302 - /Rhinolophus mehelyi/



2635 - /Vormela peregusna/



1306 - /Rhinolophus blasii/



1321 - /Myotis emarginatus/



1308 - /Barbastella barbastellus/



1305 - /Rhinolophus euryale/



1193 -	/BOMBINA VARIEGATE/
1279 -	/ELAPHE QUATUORLINEATE/
1220 -	/EMYS ORBICULARIS/
1219 -	/TESTUDO GRAECA/
1217 -	/TESTUDO HERMANNI/
1171 -	/TRITURUS KARELINII/



1193 - \_\_\_\_\_  
/BOMBINA VARIEGATE/



1279 - \_\_\_\_\_ /ELAPHE  
QUATUORLINEATE/



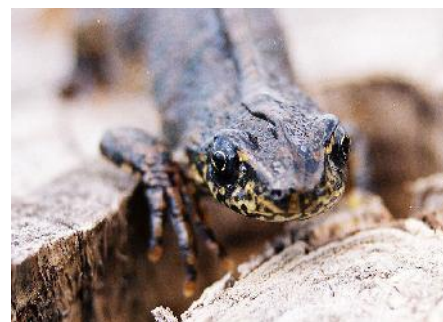
1220 - \_\_\_\_\_ /EMYS ORBICULARIS/



1219 - \_\_\_\_\_ /TESTUDO  
GRAECA/



1217 - \_\_\_\_\_ /TESTUDO HERMANNI/



1171 - \_\_\_\_\_ /TRITURUS KARELINII/

1137 -

/BARBUS PLEBEJUS/



1137 -

/BARBUS PLEBEJUS/

5.

,

II

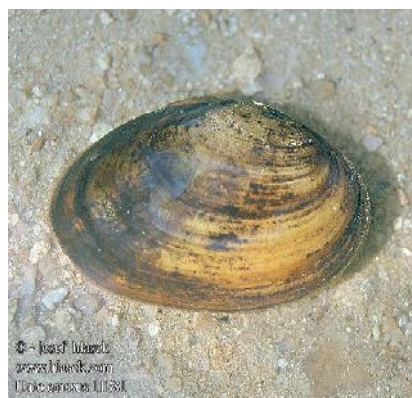
92/43/EEC

1093 -	/AUSTROPOTAMOBIOUS TORRENTIUM/
1032 -	/UNIO CRASSUS/
4053 -	/PARACALOPTENUS CALOPTENOIDES/
4028 -	/CATOPTA THRIPS/
1074 -	/ERIOGASTER CATAX/
1065 -	/EUPHYDRYA SAURINIA/
1078 -	/CALLIMORPHAQUA DRIPUNCTARIA/
1060 -	/LYCAENA DISPAR/
4039 -	- V /NYMPHALIS VAUALBUM/
4042 -	/POLYOMMATUS EROIDES/
1088 -	/CERAMBYX CERDO/
1083 -	/LUCANUS CERVUS/
1089 -	/MORIMUS FUNEREUS/
1087 -	/ROSALIA ALPINA/





1093 -  
/AUSTROPOTAMOBIOUS  
TORRENTIUM/



1032 - /UNIO  
CRASSUS/



4053 -  
/PARACALOPTENUS  
CALOPTENOIDES/



4028 - /CATOPTA THRIPS/



1074 -  
/ERIOGASTER CATAX/



1065 - /EUPHYDRYAS  
AURINIA/



1078 - /CALLIMORPHA  
DRIPUNCTARIA/



1060 -  
/LYCAENA DISPAR/



4039 - NYMPHALIS VAUALBUM



4042 -  
/POLYOMMATUS EROIDES/



1088 - /CERAMBYX  
CERDO/



1083 -  
/LUCANUS CERVUS/





1089 - /MORIMUS FUNEREUS



1087 - /ROSALIA ALPINA/

6.

II

92/43/EEC

2327 -	/HIMANTOGLOSSUM CAPRINUM/
2079 -	/MOEHRINGIA JANKAE/



2327 - /HIMANTOGLOSSUM CAPRINUM/



2079 - /MOEHRINGIA JANKAE/

7.

/RANA DALMATINA/
/BUFO VIRIDIS/
/HYLA ARBOREA/
/MOLOPS ALPESTRIS KALOFERICUS/

/EREBIA MEDUSA/
/GLAUCOPSYCHE ALEXIS/
/HIPPARCHIA SENTHES/
/PARNASSIUS APOLLO/
/NYMPHALIS XANTHOMELAS/
/PARNASSIUS MNEMOSYNE/
/APATURA IRIS/
/LIMENITIS POPULI/
/MELITAEA AURELIA/
/MELITAEA BRITOMARTIS/
/MELITAEA TRIVIA/
/MACULINE AALCON/
/POLYDESMUS ZONKOVI/
/BRENTHIS HECATE/
/CALOSOMA INQUISITOR/
/CALOSOMA SYCOPHANTA/
/CARABUS CAVERNOSUS/
/PARANOCARODES STRAUBEI/
/CARABUS SCABROSUS/
/MACULINEA ARION/
/CARABUS SCHEIDLERI VERSICOLOR/
/ABLEPHARUS KITAIBELII/
/CARABUS INTRICATUS/
/MELES MELES/
/DRYOMYS NITEDULA/
/ERINACEUS EUROPAEUS/
/EPTESICUS SEROTINUS/
/    /    / NYCTALUS NOCTULA/
/PIPISTRELLUS NATHUSII/
/MUSCARDINUS AVELLANARIUS/
/MYOXUS GLIS/
/MYOTIS AUSTRIACUS/
/MUSTELA NIVALIS/
/PIPISTRELLUS PIPISTRELLUS/
/VERBASCUM ADRIANOPOLITANUM/
/ACHILLEA GRANDIFOLIA/
/ANCHUSA HYBRIDA/
/ANEMONE SYLVESTRIS/
/CENTAUREA GRACILENTA/
/CARDUUS THRACICUS/
/ANACAMPTIS PYRAMIDALIS/
/DIANTHUS MOESIACUS/
/PULSATILLA HALLERI/
/TRAGOPOGON BALCANICUM/
/TULIPA URUMOFFII/

/FESTUCA THRACICA/
/VERBASCUM HUMILE/
/VERONICA MULTIFIDA/
/BETONICA BULGARICA/
/ATROPA BELLA-DONNA/
/ASTRACANTHA THRACICA/
/AQUILEGIA NIGRICANS/
/TULIPA AUSTRALIS/
/HYPERICUM UMBELLATUM/
/MOEHRINGIA GRISEBACHII/
MINUARTIA GARCKEANA
/ACANTHUS BALKANICUS/
/ONOBRYCHIS DEGENII/
/LIMODORUM ABORTIVUM/
/AETHIONEMA ARABICUM/
/ALYSSOIDES BULGARICA/
/ORCHIS MILITARIS/
/IRIS REICHENBACHII/
/PEUCEDANUM VITIJUGUM SSP. MINUTIFOLIUM/
/ONOSMA THRACICA/
/OPHRYS CORNUTA/
/OPHRYS MAMMOSA/
/GENTIANELLA BULGARICA/
/GENISTA RUMELICA/
/FRITILLARIA PONTICA/
/OPOPANAX CHIRONIUM SSP.BULGARICUM/
/MEDICAGO RHODOPAEA/
/ACHILLEA AGERATIFOLIA/
( )/COLUBER CASPIUS/
/CORONELLA AUSTRIACA/
/ELAPHE LONGISSIMA/
/LACERTA VIRIDIS/
/VIPERA AMMODYTES/
/NATRIX TESSELLATA/
/PODARCIS MURALIS/
/PODARCIS TAURICA/
/LACERTA TRILINEATA/





/RANA DALMATINA/



/BUFO VIRIDIS/



/HYLA ARBOREA/



MOLOPS ALPESTRIS  
KALOFERICUS



EREBIA MEDUSA



GLAUCOPSYCHE ALEXIS



HIPPARCHIA SENTHES



PARNASSIUS APOLLO



NYMPHALIS XANTHOMELAS



PARNASSIUS MNEMOSYNE



/APATURA  
IRIS/



LIMENITIS POPULI





MELITAEA AURELIA



MELITAEA BRITOMARTIS



MELITAEA TRIVIA



MACULINE AALCON



POLYDESMUS ZONKOVI



BRENTHIS HECATE



CALOSOMA  
INQUISITOR



/CALOSOMA SYCOPHANTA/



CARABUS CAVERNOSUS



PARANOCARODES STRAUBEI



CARABUS SCABROSUS



MACULINEA ARION





CARABUS SCHEIDLERI  
VERSICOLOR



ABLEPHARUS KITABELII



CARABUS INTRICATUS



MELES MELES



DRYOMYS NITEDULA



ERINACEUS EUROPAEUS



EPTESICUS SEROTINUS



NYCTALUS NOCTULA



PIPISTRELLUS NATHUSII



MUSCARDINUS  
AVELLANARIUS



MYOXUS GLIS



MYOTIS AUSTRIACUS





/MUSTELA  
NIVALIS/



/PIPISTRELLUS PIPISTRELLUS/



/VERBASCUM  
ADRIANOPOLITANUM/



/ACHILLEA GRANDIFOLIA/



/ANCHUSA  
HYBRIDA/



/ANEMONE  
SYLVESTRIS/



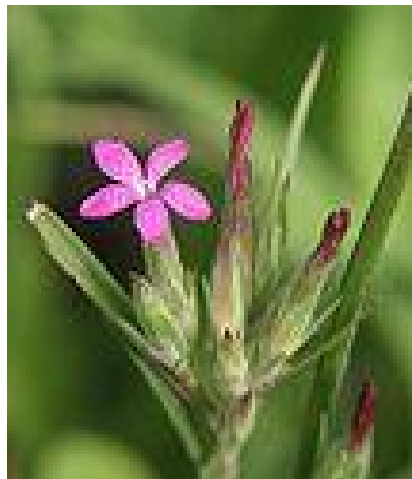
/CENTAUREA GRACILENTA/



/CARDUUS THRACICUS/



[/ANACAMPTIS PYRAMIDALIS/](#)



[/DIANTHUS MOESIACUS/](#)



[/PULSATILLA HALLERI/](#)



[/TRAGOOGON BALCANICUM/](#)



[/TULIPA URUMOFFII/](#)



[/FESTUCA THRACICA/](#)



[/VERBASCUM HUMILE/](#)



[/VERONICA MULTIFIDA/](#)





**/BETONICA BULGARICA/**



**/ATROPA BELLA-DONNA/**



**/ASTRACANTHA THRACICA/**



**/AQUILEGIA NIGRICANS/**



**/TULIPA AUSTRALIS/**



**/HYPERICUM UMBELLATUM/**



**/MOEHRINGIA GRISEBACHII/**



**MINUARTIA GARCKEANA**





**/ACANTHUS BALCANICUS/**



**/ONOBRYCHIS DEGENII/**



**/LIMODORUM ABORTIVUM/**



**/AETHIONEMA ARABICUM/**



**/ALYSSOIDES BULGARICA/**



**/ORCHIS MILITARIS/**



**/IRIS REICHENBACHII/**



**/PEUCEDANUM VITIUGUM SSP. MINUTIFOLIUM/**



**/ONOSMA THRACICA/**

**/OPHRYS CORNUTA/**

**/OPHRYS MAMMOSA/**

**/GENTIANELLA BULGARICA/**





**/GENISTA RUMELICA/**



**/FRITILLARIA PONTICA/**



**/OPOPANAX CHIRONIUM/  
SSP.BULGARICUM/**



**/MEDICAGO RHODOPAEA/**



**/ACHILLEA AGERATIFOLIA/**



**( )  
/COLUBER CASPIUS/**



**/CORONELLA  
AUSTRIACA/**



**/ELAPHE LONGISSIMA/**



**/LACERTA VIRIDIS/**



**/VIPERA AMMODYTES/**



**/NATRIX  
TESSELLATA/**



**/PODARCIS  
MURALIS/**



---

/PODARCIS  
TAURICA



---

/LACERTA  
TRILINEATA